



131 Godley Road, Green Bay, Auckland 0604
P.O. Box 80 070, Green Bay, Auckland 0604
Telephone: 09 817 6666
Email: admin@greenbay.school.nz

INFORMATION BOOKLET INTERNATIONAL STUDENTS LIVING WITH PARENTS



Green Bay School is situated on the fringe of The Waitakere Ranges.
This environment is representative of our School Values with
three mountains symbolising our School Expectations:

RESPECT
Whakaute

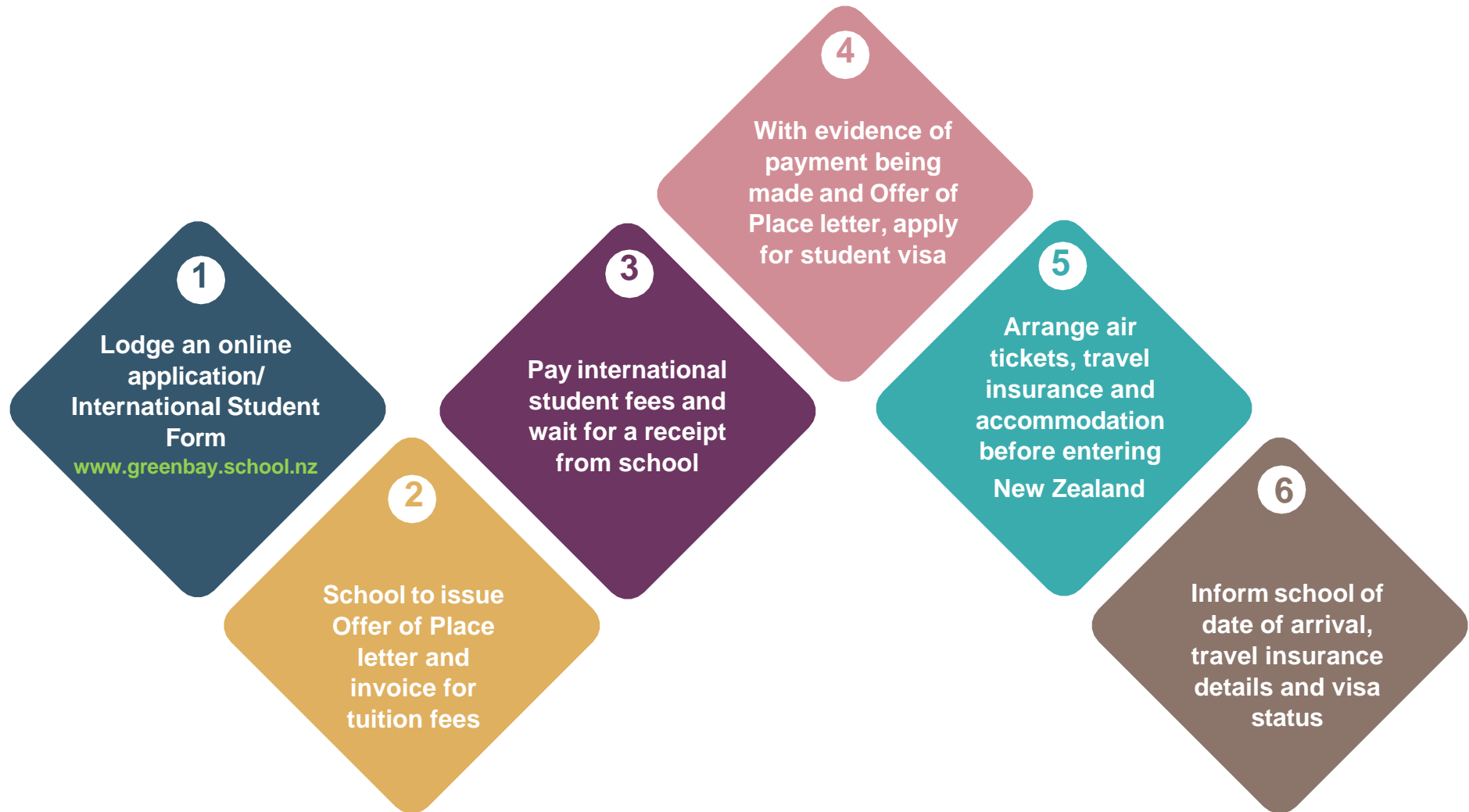
POSITIVITY
Matika

INITIATIVE
Auahatia

All students are expected to seize opportunities
and learn harmoniously with others.

Mauri tu mauri ora, the active life invokes life!

Procedures for International Student Enrolment at Green Bay Primary and Intermediate School



CONTENTS

BEFORE YOU ARRIVE

P2 The Code
P2 Quality Assurance
P2 Immigration
P2 Medical & Travel Insurance
P3 Health Insurance
P3 Accident Insurance
P3 Application Requirements
P3 Conditions of Enrolment

MONEY

P4 Fees
P4 Administration Fee
P4 Fee Protection Policy
P5 Refund
P5 No Refunds
P5 Valuables/Money
P5 Opening a Bank Account
P6 Cost of Living (change to prices)

WHEN YOU ARRIVE

P6 Behaviour
P6 Orientation
P6 School Hours
P6 Absences and Lateness
P7 Reports and Interviews
P7 Educational Concerns

SAFETY

P7 Pastoral Care
P7 Grievance Procedures
P7 Bicycles and Skateboards

P7 Transport
P8 Road Safety
P8 Cybersafety
P8 Sun Safety
P8 Climate and Clothing (change to weather)
P8 Harassment/Discrimination
P8 Abuse
P8 Outdoor Education
P8 Outdoor Education Blanket Consent Form
P9 Medication
P9 Illness/Injury at School
P9 Illness/Injury at Home
P9 Civil Defence Procedure
P9 Safety
P9 Student Supervision
P9 New Zealand Laws
P10 Driving

LEARNING

P10 English Language Learning
P10 Library
P10 High School
P10 Curriculum
P10 Sports/Physical Education
P10 Science
P10 Te Reo
P10 Music Lessons
P10 NZ Curriculum
P11 Year Levels
P12 Year 7&8 Technology
P12 Year 7&8 Pubertal Change
P12 Principals Message

INFORMATION BOOKLET FOR INTERNATIONAL STUDENTS

THE CODE

Green Bay School has agreed to observe and be bound by the Code of Practice for the Pastoral Care of International Students (The Code) published by the New Zealand Qualifications Authority (NZQA). Copies of the code are available on request from this institution or from the NZQA website International Students section. The Code of Practice is available in Arabic, Chinese (traditional and simplified), Japanese, Korean and Thai.

QUALITY ASSURANCE

New Zealand schools are visited regularly by the Education Review Office. Reports about their visits are available on The ERO website under 'Early Childhood and School Reports'.

IMMIGRATION

Full details of visa and permit requirements, advice on rights to employment in New Zealand while studying, and reporting requirements are available through the New Zealand Immigration Service, and can be viewed on their website at <http://www.immigration.govt.nz>

Green Bay School must inform NZ Immigration if:

- a) There is a breach of visa conditions
- b) A student unexpectedly leaves our school

MEDICAL AND TRAVEL INSURANCE

Before enrolment, international students must have appropriate and current medical and travel insurance for the full period of the course, from leaving home to returning home.

- All students must have acceptable, appropriate, and current medical and travel insurance for the **full** duration, i.e., from home to home, of their planned study **before enrolment**, as specified in the Code.

"Acceptable" insurance complies with the Code and is acceptable to the school.

"Appropriate" insurance refers to private insurance policy, and should meet the following guidelines:

Length of cover: The policy should cover the full duration of the planned study including any holiday breaks taken. ACC provides cover for all people in New Zealand for injuries and accidents, but not if they occur overseas, so students taking holidays out of New Zealand during their study must be covered by their private insurance policy.

- The policy must cover:
 - Travel: delays, missed flights, and any medical expenses incurred during travel into or out of New Zealand.
 - Health cover: (an unlimited sum insured).
 - all medical expenses for hospital treatment due to illness or injury (in excess of ACC cover)
 - medical evacuation related to serious injury or illness
 - the cost of family members' travel if the student suffers serious illness or injury
 - emergency dental treatment
 - Personal liability: negligence causing injury (including death) to another person, or damage or loss of property; and false arrest and wrongful detention.
 - Repatriation: if the student's study plans are interrupted due to injury or illness that requires them to return home
 - Death: in the event of the student's death
 - the repatriation of their body, or their funeral expenses
 - the travel costs for family members
 - Search and rescue: any search and rescue operation performed to find the student

- Green Bay School advises all prospective students of the standard wording as set out in the Code of Practice. See Information about Your Rights in New Zealand
 - Students purchasing insurance should purchase insurance cover at the time of fee payment and before they leave their home country
 - If the insurance is provided from a New Zealand company, policy details should be provided in the student's first language where possible

In the case of overseas policy providers, **students must provide the school with the policy details in English** before the student attends classes.

HEALTH INSURANCE

Most international students are not entitled to publicly funded health services while in New Zealand. If you receive medical treatment during your visit, you may be liable for the full costs of that treatment. Full details on entitlements to publicly funded health services are available through the Ministry of Health, and can be viewed on their website at <http://www.moh.govt.nz>

ACCIDENT INSURANCE

Insurance is required to cover any health costs that may arise.

APPLICATION REQUIREMENTS

1. Local and International enrolment forms must be completed (forms can be obtained from the school office).
2. Students must provide the following information:
 - Full name of student and parent(s)
 - Current address and contact phone number(s) while staying in New Zealand
 - Passport and permit details (photocopies of title page and student permit will be taken)
 - Evidence of Medical and travel insurance (we will need to record the insurer, the type of insurance, expiry date and policy number). If using an overseas company, we will require policy details in English
 - Details of any medical/learning needs. Details of immunisation
 - A copy of their latest school report (in English)
3. Fees must be paid before the student begins classroom instructions.
4. Students must agree to notify the school of any change in their contact details and residential address.

CONDITIONS OF ENROLMENT

In addition to the conditions listed here, all conditions that are part of the contract with parents, the fees refund policy, and other school policies also apply.

1. Parents must sign all agreements between the School and International Students.
2. Students and parents/legal guardians must accept and abide by rules regarding behaviour and conduct that apply to all students. Unacceptable behaviour may result in the termination of tuition.
3. Students must observe the laws of New Zealand.
4. Students must observe the conditions of their visa. If a student breaks the terms of the visa the school will report the fact to the New Zealand Immigration Service, which may result in the student having to leave New Zealand.
5. Because class placements are decided on the evidence of assessment after arrival in New Zealand, all information given before enrolment about placement on courses and in classes is provisional. The school reserves the right to adjust placements and individual programmes at any time if it is in the student's interests to do so.
6. The student will attend the school on all occasions when it is open unless prevented by illness or other urgent cause.
7. Tuition may be terminated if the student fails to comply with the school rules or breaches the conditions of their visa.

8. Tuition fees will be paid in full before enrolment, or before enrolment is renewed (whichever applies).
9. All additional costs (as outlined in the school prospectus) will be paid promptly, as required.
10. The conditions of the Fee Refund Policy will be accepted.
11. All students are required to have travel and medical insurance for the duration of their period of enrolment, from home to home. Students' families normally make their own insurance arrangements, but schools check that they are adequate and cover the full period from the child leaving home to the child's arrival back home. A copy in English must be provided.
12. All international students in years 1 to 6 must live with their parents or legal guardians (proof of legal guardianship must be supplied). Y7/8 students may live with their parents, with a Designated or Homestay Caregiver.
13. All disputes will be dealt within New Zealand law.
14. The school's complaints procedure for international students will be used to deal with grievances.
15. Parents must inform the school of their address, telephone number and e-mail address. The parents will advise the school of any change in their contact details.

FEES

This fee structure is effective for 2024 enrolments and will apply to all students enrolled for that time.

Tuition fee for full academic year, inclusive GST NZ\$12,000 + Admin fee (\$100)

Sibling discount of 10% is offered on the full year for the tuition component of the fee;
e.g. 2 = NZ\$21,600 + Admin fees (\$200)

There is no sibling discount applicable to Term or Weekly fees.

Term tuition fee, inclusive GST NZ\$3,800 + Admin fee (\$100)
Weekly tuition fee, inclusive GST NZ\$380 per week + Admin fee (\$100)

The above fees cover tuition, costs incurred using facilities and resources, Government Levy and stationery for long-term students ***only***.

For short-term students, stationery is optional at a charge of \$20.00 (please advise at the time of enrolment if you would like to purchase).

Students will be required to pay additional costs for camp, shows, school trips etc.

Fees are subject to **annual review** by the Board of Trustees and could therefore be changed from year to year.

School fees must be paid direct to the school bank account before instruction commences.

- ASB Green Bay Primary School BoT 123-070-0090711-00
noting '***students full name***' and '***international fees***' in both columns

ADMINISTRATION FEE

All students are subject to NZ\$100 administration fee.

Please note, the administration fee is a non-refundable fee which covers the initial processing of an enrolment.

FEE PROTECTION POLICY

The Board of Trustees guarantees to hold enough funds in reserve to give a refund if the enrolment is terminated or cannot be continued.

REFUND

Green Bay School must inform NZ Immigration if:

- a) There is a breach of visa conditions
- b) A student unexpectedly leaves our school

If you withdraw from your course of study before the course completion date you may be eligible for a refund of school fees. An application for refund of fees must be made in writing within 4 weeks of withdrawal. You must write to the school explaining why you have withdrawn from the course and your reasons for seeking a refund.

A refund will be given in the following instances:

1. Return home because of the student's serious illness
2. Return home because of death or serious illness of a close member of the student's family (in these instances medical evidence must be provided.)
3. Permanent Residency acquired.

Under New Zealand law in any instance where a refund is given it must be less amounts to cover cost already incurred. A refund, if given, will be less:

- an administration charge
- costs to the school already incurred for tuition
- costs already incurred for the use of facilities and resources
- the portion of the Government Levy the school is required to pay
- any other costs already incurred.

NO REFUNDS will be made to students who:

- have had their enrolment terminated because of misbehaviour, poor attendance, false enrolment details given or do not hold a current student permit
- wish to transfer to another school for whatever reasons
- have not obtained a permit for study after the required 3 months

VALUABLES/MONEY

Students should **NOT bring money** to school unless specifically required for lunch orders or trips/shows. Students should not bring skateboards, radios, iPod, cellular telephones and valuable electronic items to school. **The school accepts no responsibility for such possessions.**

OPENING A BANK ACCOUNT

If you want to open a bank account in New Zealand, you can do so provided you have the following:

Identification - Rules differ between banks on how much identification you need. You will need at least one form of photo ID, such as a passport (NZ or Overseas) or a NZ-issued driver's licence.

Place of residence (in New Zealand) for mail to get sent to.

IRD Number - the 8 or 9 digit number issued to you by Inland Revenue. If you have one, you will need to supply it for tax purposes, especially if you open an interest-accruing account. This isn't needed to set up an account, but your tax rate will default to the highest rate of 33%.

Opening Balance - this varies from bank to bank.

You need to be 13 years or over to operate your own bank account and receive an EFTPOS card.

Most banks will issue you with an EFTPOS card on the spot. It will be plain and won't have your name embossed on it, but you can use it straight away. All banks offer Visa Debit cards to customers 18 and over if they wish, which allows the card to be used online and overseas (normal EFTPOS cards can only be used in brick-and-mortar stores in New Zealand), and these will be sent to you in the post in the coming days.

When issued with an EFTPOS card, you will need to choose a four-digit PIN. Normal rules apply - don't choose 1111 or 1234, any sequential number sequence, your birthday or the last four digits of your card number. In most cases, this will need to be loaded in the bank branch.

COST OF LIVING

Information about this is available at <https://www.newzealandnow.govt.nz/living-in-nz/money-tax/comparable-living-costs>

BEHAVIOUR

The student and their parents must agree to comply with the Expectations set out in the school's Vision. The school rules are known as Habits. They reinforce our School Expectations and are available on our school website.

ORIENTATION

On arrival students will be given the opportunity to familiarise themselves with the school. Students will be provided with a copy of the school's information booklet. The student will discuss this with the ESOL teacher.

For health and safety reasons, all visitors which include parents/caregivers, friends, relatives and Agents must come through the school office to sign in when visiting the School.

Green Bay School Expectations:

“Respect, Positivity, Initiative”

Our Expectations came out of community consultation. Green Bay School is situated on the fringe of the Waitakere Ranges. This environment is representative of our School Expectations with the three mountains symbolising Respect, Positivity and Initiative – all students are expected to seize opportunities and learn harmoniously with others.

The school motto is ‘Mauri Tu Mauri Ora’. Freely translated, it means ‘Life is for living – The active life invokes life!’

SCHOOL HOURS

7.00am	Before School Care opens (Green Bay Kids Own)
8.30am	School grounds are open for students
8.30am	Road patrol begins under teacher supervision
8.50am	Morning Road patrol finishes
8.50am	School commences
10.50-11.15am	Morning break (earlier ‘brain food breaks’ are at teachers’ discretion)
1.15pm-1.55pm	Lunch (children sit supervised for 10 minutes while eating)
1.55pm	Rubbish, drink, toilet
2.00pm	Afternoon school commences
2.55pm	School closes. After School Care opens. Road patrol under teacher supervision
3.10pm	Afternoon Road Patrol finishes



All students must go straight home after school unless enrolled in the After-School Care programme. When picking up/dropping off students, all parents/caregivers must park on the roadside. **The school car parks are for staff parking only.**

ABSENCES AND LATENESS

If a student is going to be absent from school, the school must be notified by the parent. The school office can be rung between 8.30am and 8.55am or you can email absentees@greenbay.school.nz. If we are not notified, we will contact the parent on the day of absence to ensure the safety of the student.

If a student is going to be late, the school must be notified. Once the student arrives at school they must sign in the office and take a red late pass to their classroom teacher (showing procedure has been followed). Any absence and lateness concerns will be communicated to the parent by the school. If the student is absent on a regular basis without a justified reason, the school will notify the Immigration Department.

REPORTS AND INTERVIEWS

Formal interviews are held early, and mid-year and written reports are issued at the end of each year for students who are enrolled for the 10-week periods of Term 2 and/or 4. At any time during the year, an appointment can be made with the student's classroom/ESOL/LSE (Learning Support Co-ordinator) teacher to discuss a student's achievements.

EDUCATIONAL CONCERNS

The classroom teacher, ESOL teacher and/or the LSE will address student educational concerns.

PASTORAL CARE

As a signatory to The Code, International Students' wellbeing (as well as their learning) is the responsibility of Green Bay School. Agents are monitored by Green Bay School. Any concerns about Agents must be reported to the Director of International Students.

International Students' wellbeing will be nurtured by the classroom teacher. The ESOL teacher will also take an interest in the student's welfare, as will the Team Leader of the student's teaching team. Any student or parental concerns (including racial or sexual harassment) should be directed in the first instance to either the classroom teacher or the ESOL teacher.

We use a variety of supportive strategies to help students settle in. One of these is to allocate peer "buddies" to befriend new students. Another is to enlist the help of our ESOL teacher, who speaks some Asian languages (including Mandarin) to translate. Our staff are also able to call upon other students elsewhere within the school who may help translate or communicate if a child needs extra support. Once a student is settled, all communication, where possible, will be delivered via English in order to strengthen their understanding.

The Director of International Students is Mrs Veronica Zane who can be contacted via the school office or email veronicaz@greenbay.school.nz. Mrs Veronica Zane can be contacted 24/7 on mobile 021 102 8908.

GRIEVANCE PROCEDURES

In accordance with school policy **any complaint/concern** that a student or parents has should be directed to the student's classroom teacher or ESOL teacher. Failing resolution, the complaint should be directed to The Director of International Students who is responsible for administering the Code of Practice, or the Principal. Unresolved problems can be referred to the Disputes Resolution Scheme (DRS). Further details are available at <http://www.fairwayresolution.com/istudent-complaints> Complaints can also be made to NZQA. A complaints form can be downloaded from the NZQA website. Along with any scanned evidence, the form can be emailed to: schoolcode.enquiries@nzqa.govt.nz For more information about the complaint process, contact NZQA on 0800 697 296.

The DRS will need to be shown that the School was asked to act on the concern before they were contacted. The Appeal Authority will consult with the school.

BICYCLES & SKATEBOARDS for STUDENTS LIVING WITH PARENTS OR DESIGNATED CAREGIVERS

The Traffic Department does not recommend that children under 9 years ride on the roads. Therefore, only Year 5,6,7 and 8 children may ride bicycles, skateboards or scooters to school unsupervised. The Board of Trustees' policy is that children who ride their bike to school must wear a safety helmet. In the interests of safety, bicycles, skateboards and scooters may not be ridden within school grounds before school, during school hours, or after school before 3:15 pm, (other than on our official charity fund-raising 'Wheels Day'). Students who ride a scooter or skateboard to school must make arrangements with the classroom teacher to store these items during the school day. The school takes no responsibility for loss or damage of these items. It is illegal for children under 15 to drive a vehicle.

TRANSPORT FOR STUDENTS LIVING WITH PARENTS OR DESIGNATED CAREGIVERS

Students walk, bike or skateboard to school. Your carers may drive you in their car. After school, at weekend and during holidays travelling to activities may include train or bus.

ROAD SAFETY

Students under the level of Year 5 may not cycle to school unless accompanied by an adult. Remember these safety rules:

- Heads up, devices down when crossing the road (**look** and **listen** for cars)
- Watch out for hidden driveways
- Use pedestrian crossings and controlled intersections

CYBERSAFETY

As part of their learning programme, students are required to comply with the school's Cybersafety policy, which must be signed by parents before students may use ICT equipment.

SUN SAFETY

Students need to wear a sun hat and sun block during Terms 1 and 4.

CLIMATE AND CLOTHING

Information about this is available at <http://www.newzealand.com/int/feature/new-zealand-climate-and-weather/>

HARASSMENT/DISCRIMINATION

Definition of harassment: Harassment is any unwanted comment, conduct or gesture directed toward an individual or a group of individuals which is insulting, intimidating, humiliating, malicious, degrading or offensive, and is either repeated or an isolated incident which is so significant that it adversely affects someone's performance, contribution or work environment. Harassment is a form of discrimination. An example of harassment is touching private parts including the bottom.

How to handle harassment: Many harassment complaints can be resolved informally through confronting the person responsible, explaining that their behaviour is offensive and seeking an assurance that it will stop. It may be necessary to approach another staff member for support at this stage.

If the harassment is very serious, or continues after an initial confrontation about it, the person being harassed should report it to one of the following:

- the school management, as a formal complaint
- the police, if the harassment involves sexual or physical assault
- the Human Rights Commission, if the complainant doesn't want to complain to the school management or is not satisfied with the result of an internal investigation

ABUSE

When staff consider a student is at risk of abuse, they contact the Principal. Oranga Tamariki (the government department responsible for children) and NZQA may be contacted.

OUTDOOR EDUCATION

Extending students' learning in NZ means students have opportunities to go on trips outside the classroom and their school environment. Examples of these might be visits to the zoo, museums, art galleries, topical places. Parental permission is sought beforehand via a letter from teachers. The potential risks for each activity are considered and an action plan is created. Additional money is required from families for these trips. Homestay carers/ Designated Caregivers are encouraged to accompany students. Trips are always related to a learning study that is underway.

OUTDOOR EDUCATION BLANKET CONSENT FORM

We also ask that all parents of our school sign consent upon enrolment to the following:

- activities on site in the school grounds, such as: physical fitness, sports, games etc.
- activities off site in the local community during school time, such as: learning road safety skills, walking to the local shops or parks
- off-site events after school, such as: sport training or performing arts training
- on-site school pool for water survival and swimming lessons (always supervised)

MEDICATION

The school must be informed if a student has any medical condition e.g. allergies, asthma, or requires medication during the school day. All medication must be kept in the school sick bay.

ILLNESS/INJURY AT SCHOOL

In the case of illness/injury/accident that cannot be catered for in the school sickbay or if students are distressed, the parent and homestay/designated caregiver will be contacted. If we were unable to make contact with anyone, we would ensure the student received medical treatment. If we suspect broken bones or more serious injuries, we will seek **immediate** medical attention. Students' insurance companies may need to be contacted in the event of an accident or emergency.



ILLNESS/INJURY AT HOME

The telephone number for an ambulance despatcher anywhere in NZ is 111 for emergencies. The telephone despatcher will ask whether you want Fire, Police or Ambulance and you must be able to advise your address to the emergency despatcher. You may be charged for an ambulance. Dentists can be located via www.dentalcouncil.org.nz/

A doctor can provide support for sexual health concerns if required or phone 0800 739432. The school will organise professional counselling as appropriate. The LSE must be informed about International Students' injuries, illness and health concerns.

Mental health services, including eating disorders:

Information on mental health services can be obtained from the Mental Health Foundation of New Zealand at www.mentalhealth.org.nz All areas in New Zealand have a regional mental health service able to provide an emergency response, advice, and support, and a face- to-face assessment if necessary. Psychiatric Emergency Services can be contacted on 0800 920 092. Members of the public may access this service if they are concerned about their own mental health or that of someone they know (especially if there are safety issues).

For urgent assistance after hours 7 days a week: Auckland 0800 800 717

For non-urgent issues, specialty mental health services are normally accessed by GP referral. If the school or parent are concerned about the mental health of a student, the school and/or parent will encourage the student and parents to make an appointment with their GP.

The cost of most services will be covered by your medical insurance. However, some services may not be covered. The student and their parents/guardians will need to check with their insurer first before they use the service. Once the student visits the service, they will be charged and will be asked to pay for their visit – which they can then claim back from their insurer.

CIVIL DEFENCE PROCEDURE

In the case of a civil defence emergency, we would KEEP ALL STUDENTS AT SCHOOL.

STUDENTS WOULD BE RELEASED FROM SCHOOL ONLY IF COLLECTED BY THEIR HOMESTAY OR DESIGNATED CAREGIVER.

THE PRINCIPAL BECOMES THE OFFICIAL WELFARE OFFICER.

SAFETY

If you are in danger and an adult cannot help you can contact the Police by dialling 111. This is a free phone call. You can also contact Oranga Tamariki by dialling 0508 326 459.

STUDENT SUPERVISION

It is against the law to leave children under 14 without making reasonable provision for their care and supervision. What is considered 'reasonable' takes into account the circumstances in which children are left alone and the length of time they are alone. Parents are required to assess all the circumstances and make sure that any child left alone, or in the care of another child or young person is safe and not in danger.

NEW ZEALAND LAWS

No student may drink alcohol, smoke or drive a car.

DRIVING

This website provides information about adults driving in New Zealand: <http://www.drivesafe.org.nz/>

ENGLISH LANGUAGE LEARNING

Students will be given a minimum of two hours a week English lessons, in small groups, with a New Zealand registered teacher who specialises in ESOL (English as a Second Language). Students will be assessed regularly during the year.



Students will also be placed in a regular classroom appropriate to their age and needs, where they will receive appropriate instruction in all subjects in the NZ Curriculum. This will give them an opportunity to learn by immersion in The English Language.

LIBRARY

All students can borrow books from the school library. The library is open during the lunch break. We ask all students to care for books that are taken home. Students will be required to pay the replacement cost of any books that are lost or damaged.

HIGH SCHOOL

In Year 8, information about moving to High School is provided to long term International Students and their parents.

CURRICULUM

Green Bay School teaches the full NZ curriculum; Literacy (English; Oral, Reading, Writing, Visual), Mathematics, Science, Design Technology, ICT, Social Sciences, Physical Education/Sports, Languages; Tikanga Maori (cultural understanding), Careers Education, Personal The Arts; (Art, Drama, Dance and Music) and Health. Included in the Health Curriculum are programmes such as Keeping Ourselves Safe which teaches important safety messages. Kia Kaha is another Health programme, and this focuses on bullying. Some subjects are taught in discrete blocks; some are integrated together using an interesting topic.

Your learning activities are matched to you. Your teachers are always checking that you're your learning activities are meeting your needs. We check if any changes are needed with learning activities provided. Remember that your classroom teacher, the ESOL teacher and LSE will help you with your studies. If you have any difficulties, please talk to these teachers.

SPORTS/PHYSICAL EDUCATION

A brief fitness session of about 15 minutes takes place daily for all students (weather permitting). The school pool is usually open February to April. Swimming is part of the Health Curriculum and all students are expected to participate and will need to bring bathing suits (togs) and a towel in a waterproof bag. In the summer months (Terms 1 and 4), students must bring and wear a hat at school.

SCIENCE

Students in Years 2-8 receive an hour science lesson per week with a science specialist.

TE REO

All year levels receive lessons from an experienced Te Reo teacher.

MUSIC LESSONS

Years 4-6 students are taught how to play the ukulele and guitar during their music lessons at Green Bay High School.

NZ CURRICULUM

The education programme offered our international students will provide the opportunity for every child to learn, grow and succeed. The staff and faculty act in the best interest for each student regarding their spiritual, physical, social and academic development. The following is a list of the subjects that international students will most likely be participating in at Green Bay School;

1. Arts
2. Languages (English, Korean, Maori)
3. Math
4. Music
5. Literacy (Reading, Writing, Spelling, Comprehension)
6. Physical Education
7. Science
8. Social Studies

YEAR LEVELS - 2024

	Date of Birth	MOE cut-off 01/07	Year Level	AGE
New Entrant	2019	after 1 July	Y0	5yo
New Entrant	2019		Y1	5yo
New Entrant	2018	after 1 July	Y1	5-6yo
	2018		Y2	6yo
	2017	after 1 July	Y2	6-7yo
	2017		Y3	7yo
	2016	after 1 July	Y3	7-8yo
	2016		Y4	8yo
	2015	after 1 July	Y4	8-9yo
	2015		Y5	9yo
	2014	after 1 July	Y5	9-10yo
	2014		Y6	10yo
	2013	after 1 July	Y6	10-11yo
	2013		Y7	11yo
	2012	after 1 July	Y7	11-12yo
	2012		Y8	12yo
	2011	after 1 July	Y8	12-13yo
	2011		Y8	13yo

YEARS 7 and 8 Technology

Students in Years 7 and 8 attend Green Bay High School for two, one-hour sessions per week. During this time, they may be tutored in some of the following:

Soft materials (sewing)	Food technology (cooking)
Hard materials (wood, metal and plastic)	Graphics
Performing Arts	ICT
Electronics	Visual Art

YEARS 7 and 8 Pubertal Change

This is a short course of approximately eight teaching sessions. Parental consent is required.

Achievement objectives:

Students will learn to:

- describe the characteristics of pubertal change and discuss positive adjustment strategies
- identify the effects of changing situations, roles and responsibilities on relationships and describe appropriate responses
- know how to access a range of health care agencies, recreational resources and evaluate the contribution made by each to the wellbeing of community members

Learning experiences may be conducted with girls and boys separated.

Learning Experiences include:

- Ask students to identify what changes they think occur during puberty. The teacher comments about accuracy. Correct terminology is used.
- Ask students about their feelings about these changes. Identify what can be embarrassing.
- Personal hygiene to be discussed. Menstruation, sanitary protection and concerns are also explored.
- Identify who can help me including who I can talk to about pubertal change.
- Discuss changes that occur within relationships during puberty, compare ways in which people may interact at this time and identify positive ways of interacting.

Principals Message:

A warm welcome to our international students! Your presence enriches our school with global perspectives. Embrace the opportunities to learn from one another and allow this experience to broaden your knowledge of our country.

We offer all our students the best learning opportunities so that they can experience success in all that they do. We believe that every student deserves a high-quality education in an environment where they feel safe and valued. We strive to continue to build upon the foundation of high expectations that have been set to propel our students and school community to greater academic and social success.

We celebrate diversity, knowing it strengthens us. Our school's three expectations: Positivity (Matika), Respect (Whakaute) and Initiative (Auahatia) are at the forefront of all that we do.

As you embark on this educational journey, remember that you are not just students, but ambassadors of your unique background and heritage.

Anand Muthoo

Principal

Green Bay Primary & Intermediate School